

The ASHCROFT

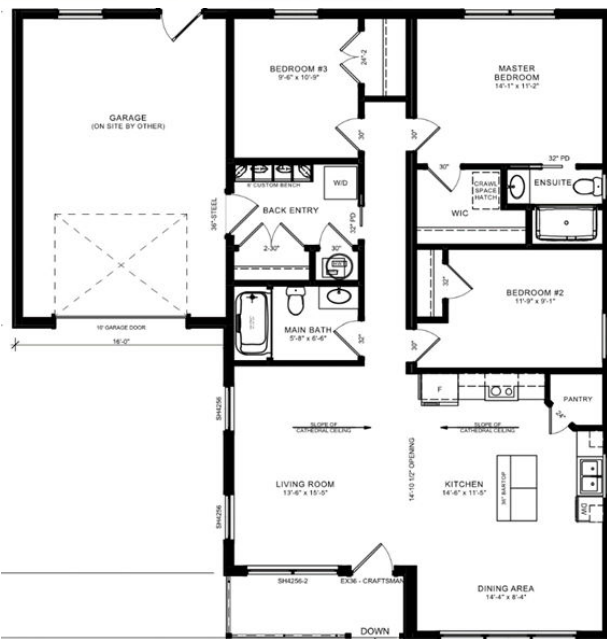
Transitional Ranch



48x30 Ranch (+garage)
1278sf / 3bed / 2bath

- Gable-end design with integrated garage
- Covered porch with dormer accents
- Open-concept kitchen with corner pantry
- Double-length Island with 36" bar top
- Bright dining nook and spacious living area
- Large master suite with walk-in closet
- Attractive baths with acrylic 5' tubs/5' shower
- Back-entry/laundry room with custom bench
- Insulated crawl space (NO STAIRS)

*A Garage-Forward
Craftsman Design*



Vincent Homes 506.721.3948

mel@vincenthomes.ca

55 Canterbury, Suite 108, Saint John, NB www.vincenthomes.ca

Shown with options. Talk to your local Ironwood Retailer for specs & details. Not for reproduction.